



Partner with Sheridan College for Research

Sheridan has over a decade of applied research experience, with approximately **150 faculty** and staff involved in research and **\$5 million** in external grant income generated per year.

Why partner with us?

- Gain access to Sheridan subject matter experts and talented, highly-skilled students, to address your Research and Development (R&D) needs.
- Gain access to state-of-the-art equipment including advanced manufacturing, mobile computing, Augmented Reality (AR)/Virtual Reality (VR), film and TV production.
- Get assistance to grow your business by generating knowledge, and developing new products and services.
- Benefit from our expertise in applying for government research grants to support collaborative research projects.



Faculty Research and Research and Incubation Centres

Sheridan Faculties

- [Animation, Arts and Design](#)
- [Applied Health and Community Studies](#)
- [Applied Science and Technology](#)
- [Humanities and Social Sciences](#)
- [Pilon School of Business](#)

120+

programs across 5
Faculties, including
26 degree programs

50+

programs with a co-op
or internship

Sheridan's Research and Incubation Centres

- [Centre for Advanced Manufacturing and Design Technologies \(CAMDT\)](#)
- [Centre for Mobile Innovation \(CMI\)](#)
- [Centre for Elder Research \(CER\)](#)
- [Screen Industries Research and Training Centre \(SIRT\)](#)
- [Canadian Music Theatre Project \(CMTP\)](#)
- [EDGE Entrepreneurship Hub](#)



About the Research and Incubation Centres

CAMDT

Accelerates the adoption of advanced manufacturing technologies. Facilities include advanced automation, robotics, mechatronics and cyber-physical system integration.

CMI

Develops creative applications of mobile technologies such as Internet of Things, wearable computing, augmented/virtual reality, and machine learning, for mobile health (mHealth) and a variety of other sectors.

CER

Conducts leading-edge, multidisciplinary research in the field of aging, by examining innovative ways to enhance the well-being of older adults and the environments that support them.

SIRT

A government-funded Technology Access Centre supporting innovation in film, television and interactive media, through world-class applied research and training in digital cinema, virtual and augmented reality, interactive media and artificial intelligence.

CMTP

Canada's first incubator for the development of music theatre works by Canadian and international composers, lyricists and book writers.

EDGE

EDGE supports a vibrant community of entrepreneurs and changemakers to create a more equitable and sustainable world through mentorship, learning programs and support to access funding.



Research Grant Funding Programs of Interest

A comprehensive list of funding opportunities can be found on the Sheridan Research [website](#).



Program	Description	Funding Amount and Duration*	Contributions from Partner	Key Partner Eligibility**
<u>SSHRC Partnership Engage</u>	Short-term partnered research activities to inform decision-making at a single partner organization from the public, private or not-for-profit sector. Open to social sciences and humanities.	\$7K to \$25K, 1 year	Cash and/or in-kind required	N/A
<u>Mitacs Accelerate</u>	Research-based student internships at businesses and non-profits. Open to all sectors.	\$7.5K per 4-month internship unit (may apply for multiple units)	\$7.5K per 4-month internship	<p>Projects with a not-for-profit must demonstrate an economic/productivity orientation, and be vetted by Mitacs for eligibility</p> <p>Partners must have an office/site where the intern(s) spends at least 50% of the internship</p>
<u>Mitacs BSI</u>	Business strategy or development-based student internships. Currently open.	\$5K per 4-month internship unit	\$5K per 4-month internship	Projects with a not-for-profit must be vetted by Mitacs for eligibility

Research Grant Funding Programs of Interest

A comprehensive list of funding opportunities can be found on the Sheridan Research [website](#).

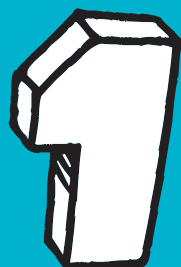
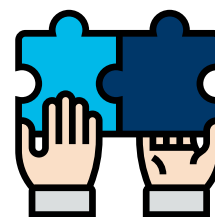


Program	Description	Funding Amount and Duration*	Contributions from Partner	Key Partner Eligibility**
<u>NSERC ARD</u>	Longer-term collaborative projects at any point in the research and development (R&D) spectrum. Open to all sectors.	Up to \$150K, 1 to 3 years	Matching cash and in-kind depending on grant value	Minimum two years in operation, two FTEs; Have separate facilities (not home-based or virtual); · See full list of criteria.
<u>OCI VIP</u>	Collaborative R&D projects to help companies develop, implement and commercialize technical innovations.	\$20,000 to \$150,000, 6 months to 2 years	Matching cash and in-kind	For-profit; Minimum two years incorporated, five FTE; R&D and/or operations in Ontario; · See full list of criteria.

* Research grant funds typically flow to the college to support students, faculty time, materials, equipment, etc. The company may be required to provide cash and/or in-kind contributions (e.g. time, materials, equipment).

**Only basic eligibility criteria are included. Please refer to the link to the program webpages for a full list of the criteria, or contact the Sheridan Research Office. In addition to minimum eligibility criteria, the funding agency will typically assess the partners' financial and management capacity.

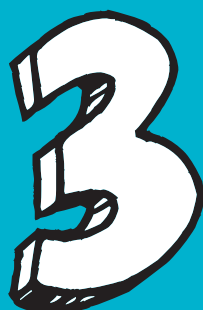
The Pre-Grant Process



Complete a brief intake form, or contact the Sheridan Research Office.

A member of the Research Office team will follow up to discuss the opportunity, and, if suitable for a research project, will help to:

- Identify and introduce suitable Faculty members/ Research Centre staff
- Define and develop the project
- Identify and apply for suitable funding opportunities including external grants, or develop contract research arrangements



For awarded projects, the Research Office will coordinate all administrative aspects, including research agreements, contributions and reporting.

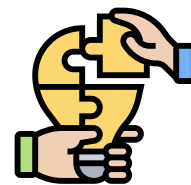


Important Considerations

- Partners are expected to collaborate with the Sheridan team at all stages of the project (i.e., assist in developing grant applications, and, for active projects, provide regular input to the college research team).
- Project start dates may vary depending on the time to submit a funding application and funding agency decision, and availability of Faculty members and students during the academic year.
- Depending on the project specifics, Intellectual Property (IP) may be owned by the industry/community partner, shared with the Principal Investigator (PI), or open source. We will facilitate completion of a Collaborative Research Agreement (CRA) with Sheridan, which defines key obligations of the parties including contributions and ownership of IP (if applicable).
- Some grants required partners to contribute cash/in-kind to support the project. We will work with you to ensure that those supports are received near to the project start to avoid any delays in the research activities. Throughout the project, you will also be required to provide periodic reporting on your in-kind contributions, and input for any other funder-required reporting.
- In most applied research circumstances (except co-ops), students working on research projects are employees of Sheridan, and are bound by Sheridan's policies and procedures. Similarly, faculty members assigned as PIs on the project are doing so as part of their role as Sheridan employees.
- As an academic institution, Sheridan cannot guarantee that the research project will be successful or that any specific results will be obtained. Working with Sheridan on a grant funded research project is different than contracting for an expected set of deliverables or a fee-for-service arrangement. We'd be happy to discuss further.



Other Supports for Research



If needed, the Sheridan Research Office can help connect you with other resources to support your research needs:

Co-op

- Students are available for full-time employment during their co-op work terms (January to April, May to August, September to December).
- The company employing the student covers their salaries; however, several subsidies exist. For example, the [Student Work Placement Program](#) can currently fund 50% to 75% of the cost.
- More details are available at the [Sheridan Co-Op website](#).

Capstone

- Upper-year students, led by faculty members, are available to work on Capstone Project and Thesis projects through their academic year.
- Partner contributions are negotiable and can be primarily in-kind.
- Students and companies should negotiate any IP at the outset.

Other Funding

Other government programs providing funds directly to start-ups and SMEs may support costs of R&D with post-secondary institutions, e.g. [NRC-IRAP](#). The following websites may be of use to identify relevant programs:

- [Government of Canada](#).
- [The Office of Small and Medium Enterprises](#).

Employment

- [Sheridan Works](#) can assist with recruiting students and graduates for full- or part-time positions
- [Sheridan Community Employment Services](#) provide various supports to connect employers and job seekers

Connect With Us!



905-845-9430, ext. 2702



research@sheridancollege.ca



research.sheridancollege.ca